

**Chorley**  
Council

Planning  
Committee Meeting

13 June 2023



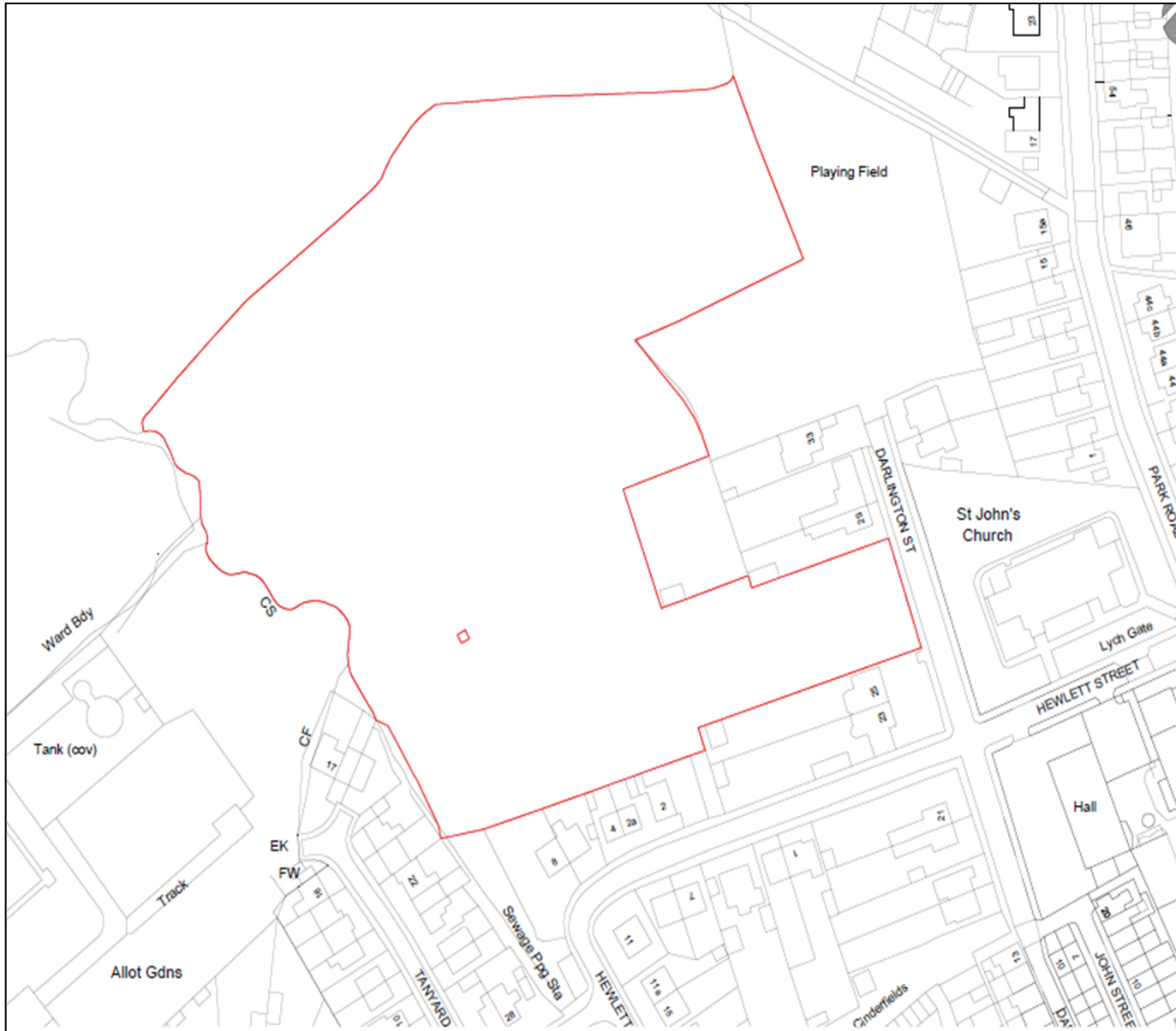
# Item 3a

21/01076/FULMAJ

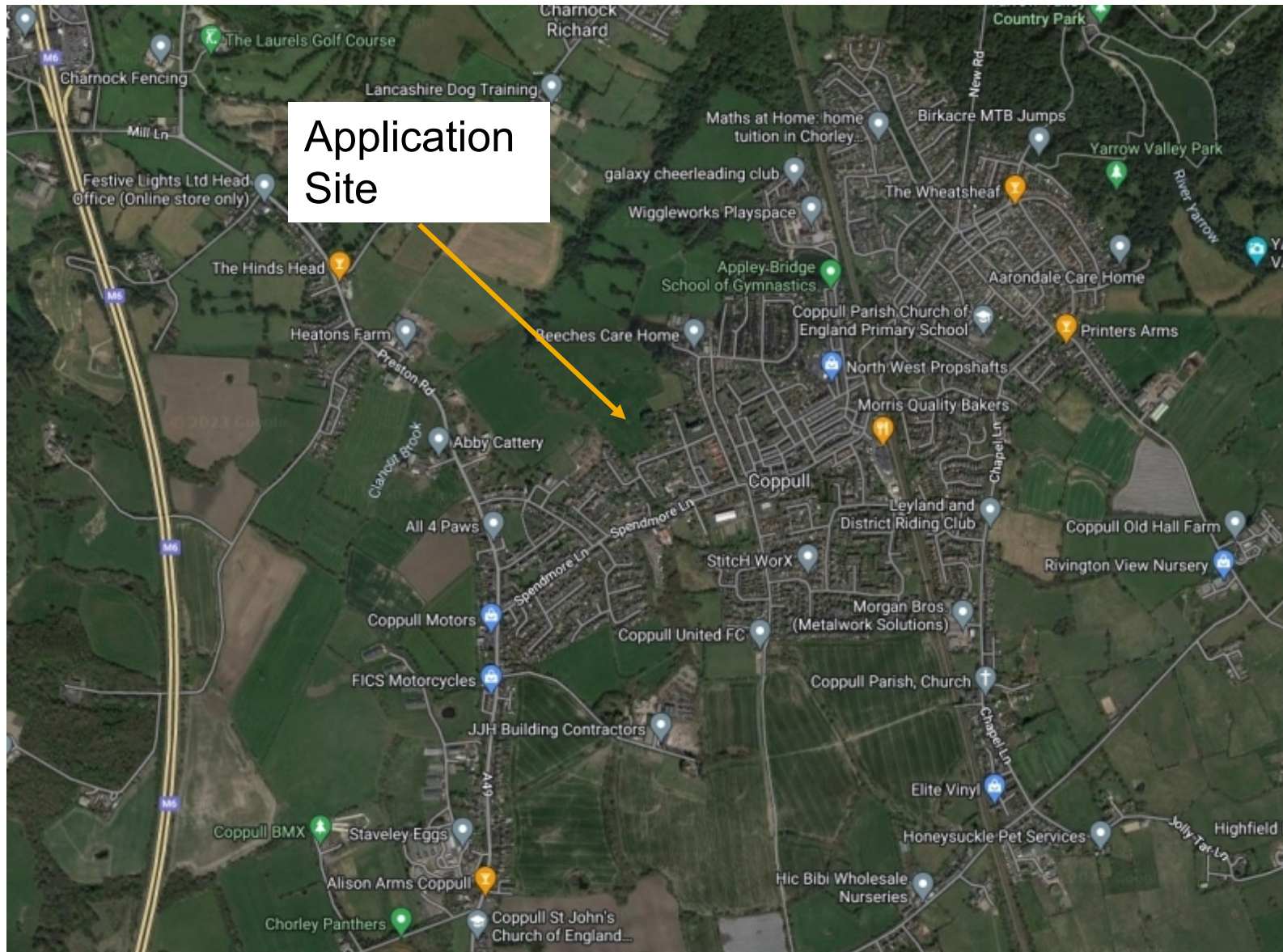
Land 53M West Of Belvedere 31 Darlington Street  
Coppull

Demolition of existing dwelling and erection of  
67no. dwellings (including 30% affordable housing)  
with associated access, car parking and  
landscaping

# Location plan



# Aerial photo



# Aerial photo







# Street Scenes



  
 Miller Homes Limited - North West Region  
 Moorhorns House  
 Woodlands Park  
 Ashton Road  
 Newton-le-Willows, W14 2 DHF  
 Telephone 0870 536 4700  
 Fax 01625 238570  
 www.millerhomes.co.uk

Project Name  
 St John's  
 Coppull

Issued For  
 Indicative Streetscenes









# Sample Elevations



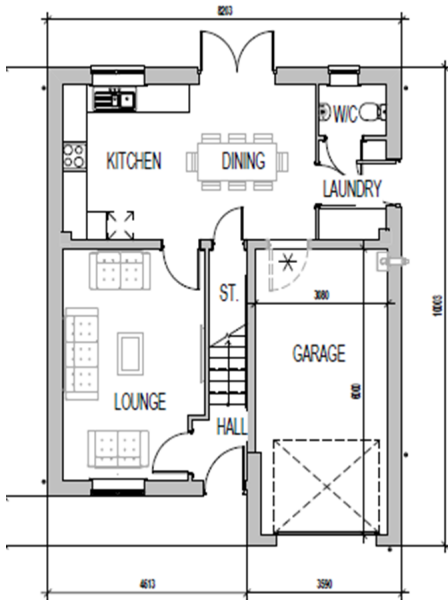
FRONT ELEVATION.



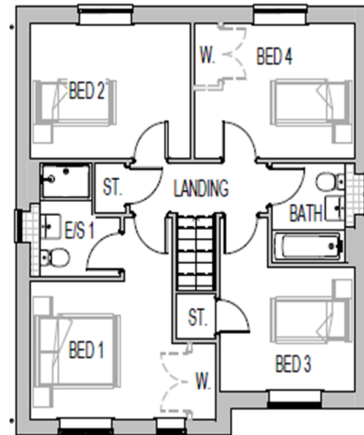
L.H. SIDE ELEVATION.



REAR ELEVATION.



GROUND FLOOR PLAN.



FIRST FLOOR PLAN.



R.H. SIDE ELEVATION.

\* INDICATES OPTIONAL INTERNAL DOOR, CONFIRM WITH REGIONAL TECHNICAL TEAM OVER SITE SPECIFIC VARIATIONS.

# Sample Elevations



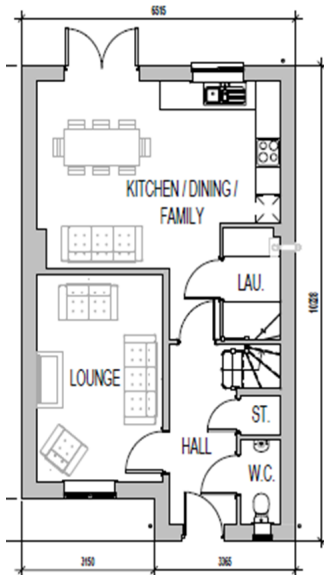
FRONT ELEVATION.



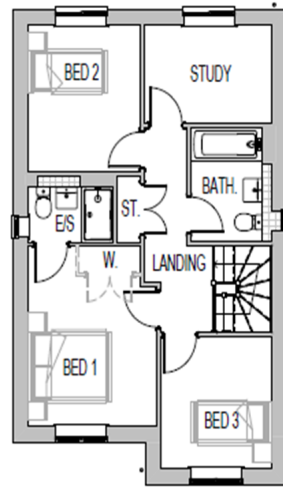
L.H. SIDE ELEVATION.



REAR ELEVATION.



GROUND FLOOR PLAN



FIRST FLOOR PLAN



R.H. SIDE ELEVATION.

# Sample Elevations



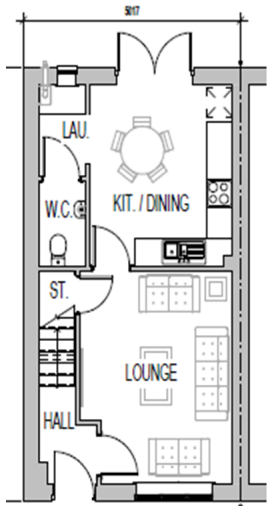
FRONT ELEVATION.



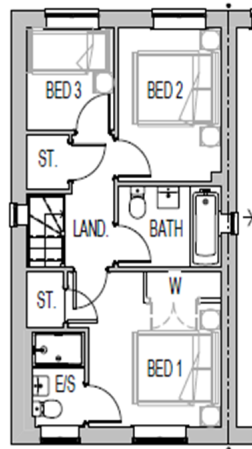
L.H. SIDE ELEVATION.



REAR ELEVATION.



GROUND FLOOR PLAN



FIRST FLOOR PLAN.



R.H. SIDE ELEVATION.

# Site photo - Park Road Junction with Spendmore Lane



## Site photo - Park Road





## Site photo – Hewlett Street



# Site photo – Darlington Street Junction with Spendmore Lane



# Site photo – Darlington Street



## Site photo – Darlington Street



# Site photo – Darlington Street / Hewlett Street Junction



## Site photo – dwelling to be demolished for site access



# Site photo – facing south east towards Hewlett Street



## Site photo – facing south towards Hewlett Street





## Site photo – facing south west



## Site photo



## Site photo



## Site photo



## Site photo

